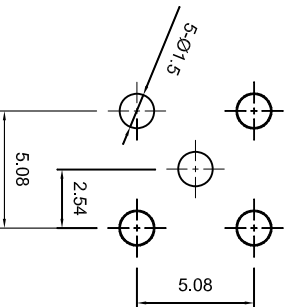
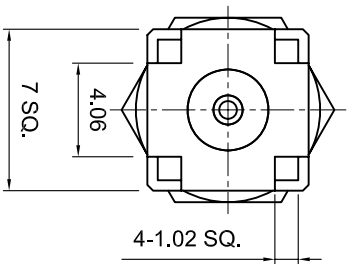
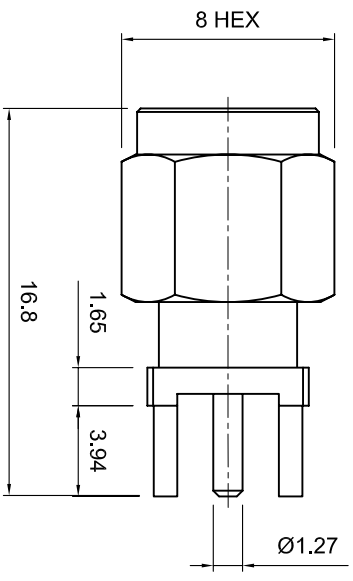




Tolerances

1-20=+/-0.2
 20-30=+/-0.3
 30-40=+/-0.4
 40-50=+/-0.5
 50-100=+/-0.75
 100-300=+/-1.5
 Angles=+/-1

Dimensions are in Millimeters



MOUNTING HOLE

Revisions		Approved	Date
Description/Approval/Date	M.H.	04/15/99	
	Checked M.H.	Date 04/17/99	
	Drawn K.R.E.	Date 04/17/99	

NOTES (plating thickness in microinches):

- Per QQ-B-626
- Per QQ-S-764
- Per QQ-C-530
- Per QQ-B-750
- Per MIL-P-19488
- Per ZZ-R-765
- Per WW-1-799
- Gold pl. 5 min. over nickel pl. 50 min. over copper strike
- Nickel pl. 100 min. over copper strike
- Per QQ-P-35
- Gold pl. 30 min. over nickel pl. 50 min. over copper strike

ITEM	MATERIAL	FINISH
Connector Body	Brass, Note 1	Gold, Note 8
Center Contact: Male	Brass, Note 1	Gold, Note 11
Insulation	Teflon, Note 5	None
Ferrule	--	--
Gasket	--	--
Hex Nut	--	--
Lock Washer	--	--

		Lighthorse Technologies, Inc. 5640 Keamy Mesa Rd, Suite N San Diego, California 92111 Part Number: LTI-SASM54GT
Description SMA vertical PCB thru hole plug. Gold plated brass body.		
Scale 3:1		
Drawing No. SMA/SASM54		File Name SASM54