



Tolerances	
1-20=+/-0.2	
20-30=+/-0.3	
30-40=+/-0.4	
40-50=+/-0.5	
50-100=+/-0.75	
100-300=+/-1.5	
Angles=+/-1	

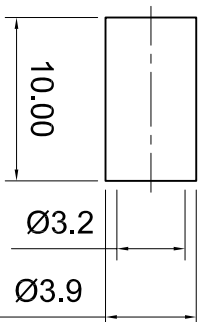
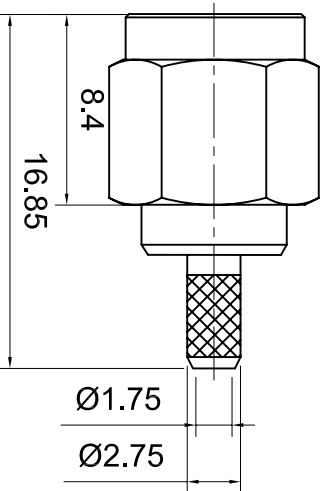
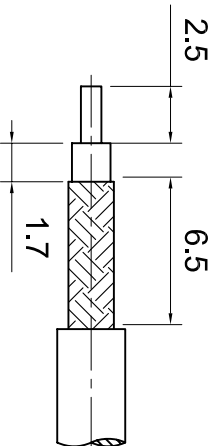
Dimensions are in Millimeters

Revisions		Approved	Date
Description/Approval/Date	Checked	M.H.	Date
	Drawn	T.J.A.	04/02/2007


NOTES (plating thickness in microinches):

1. Per QQ-B-626	6. Per ZZ-R-765	9. Nickel pl. 100 min. over copper strike
2. Per QQ-S-764	7. Per WW-1-799	10. Gold pl. 30 min. over nickel pl. 50 min. over copper strike
3. Per QQ-C-530	8. Gold pl. 5 min. over nickel pl. 50 min. over copper strike	11. Gold pl. 30 min. over nickel pl. 50 min. over copper strike
4. Per QQ-B-750		

RECOMMENDED CABLE STRIPPING DIMS



ITEM	MATERIAL	FINISH
Connector Body	Brass, Note 1	Gold, Note 8
Center Contact: Male	Brass, Note 1	Gold, Note 11
Insulation	Teflon, Note 5	None
Ferrule	Annealed Copper, Note 7	Same as body
Gasket	--	--
Hex Nut	--	--
Lock Washer	--	--



LTI
Part Number:
LTJ-SASM11GT-316

Lighthouse Technologies, Inc.
5640 Kearny Mesa Road, Suite N
San Diego, CA 92111

Description SMA straight crimp plug for RG 316, 174, 188, cable.		
Scale	Drawing No.	File Name
3:1		SASM11-316