

Electrical Ratings

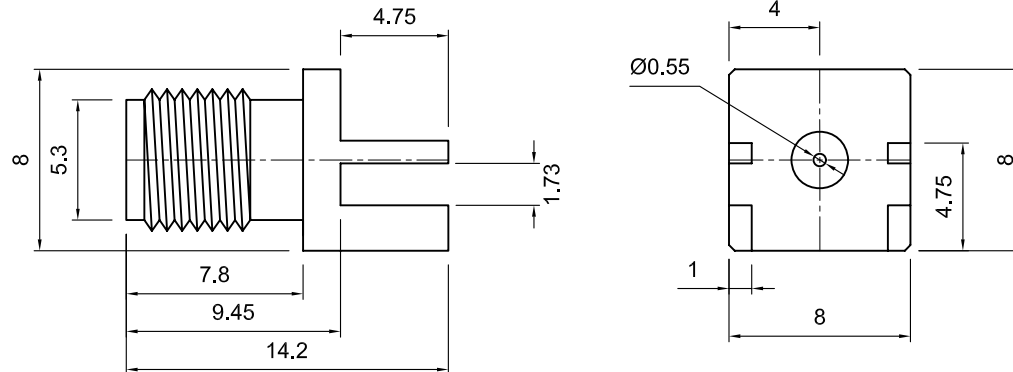
Frequency Range: DC ~ 26.5 GHz
 Impedance: 50 ohm
 Insulation Resistance: 10000 Mohm min
 Dielectric Withstanding Volatage: 1000 (Vrms min. at sea level)


Tolerances

1-20=+/-0.2
 20-30=+/-0.3
 30-40=+/-0.4
 40-50=+/-0.5
 50-100=+/-0.75
 100-300=+/-1.5
 Angles=+/-1

Dimensions are in Millimeters

Revisions Description/Approved/Date	Approved M.H.	Date 11/16/04
	Checked M.H.	Date 11/16/04
	Drawn K.R.E.	Date 11/16/04
NOTES (plating thickness in micro-inches): 1. Per QQ-B-626 2. Per QQ-S-764 3. Per QQ-C-530 4. Per QQ-B-750 5. Per MIL-P-19468 6. Per ZZ-R-765 7. Per WW-T-799 8. Gold pl. 5 min. over nickel pl. 50 min. over copper strike 9. Nickel pl. 100 min. over copper strike 10. Per QQ-P-35 11. Gold pl. 30 min. over nickel pl. 50 min. over copper strike		



ITEM	MATERIAL	FINISH	 Lighthouse Technologies, Inc. 5640 Kearny Mesa Road, Suite N San Diego, California 92111 Part Number: LTI-SASF55ZGT-P2		
Connector Body	Brass, Note 1	Gold, Note 8	Description SMA 26.5 GHz end launch jack for a .062" PCB board. Gold plated brass body, Teflon dielectric.		
Center Contact: F	BeCu, Note 3	Gold, Note 11			
Insulation	Teflon, Note 5	None			
Ferrule					
Gasket			Scale	Drawing No.	File Name
Hex Nut			1:1		SASF55ZGT-P2
Lock Washer					