



**Tolerances**

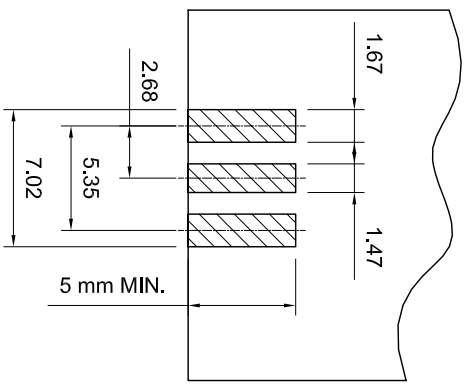
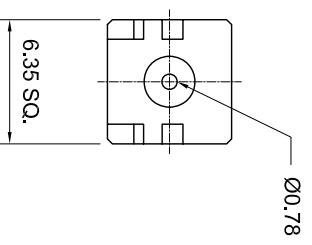
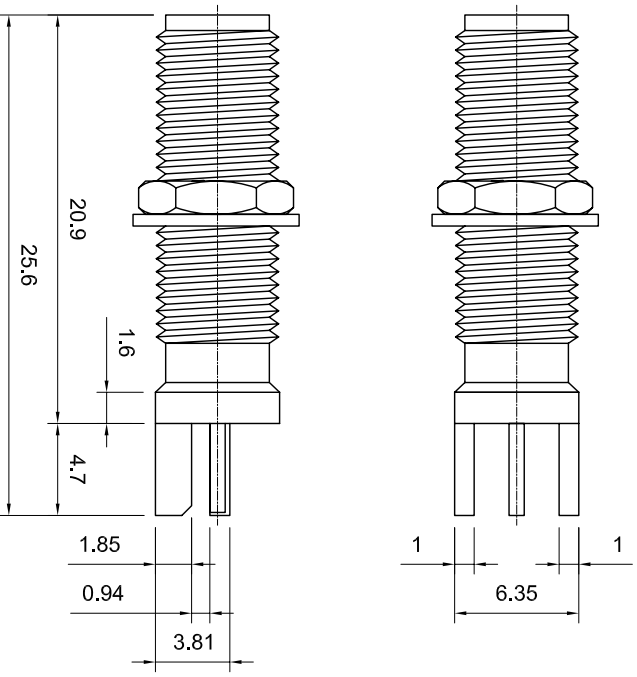
1-20=+/-0.2  
 20-30=+/-0.3  
 30-40=+/-0.4  
 40-50=+/-0.5  
 50-100=+/-0.75  
 100-300=+/-1.5  
 Angles=+/-1

**Dimensions are in Millimeters**

Revisions		Approved	Date
Description/Approval/Date	Checked	M.H.	12/23/03
	Drawn	K.R.E.	12/23/03

NOTES (plating thickness in microinches):

- Per QQ-B-626
- Per QQ-S-764
- Per QQ-C-530
- Per QQ-B-750
- Per MIL-P-19488
- Per ZZ-R-765
- Per WW-1-799
- Gold pl. 5 min. over nickel pl. 50 min. over copper strike
- Nickel pl. 100 min. over copper strike
- Per QQ-P-35
- Gold pl. 30 min. over nickel pl. 50 min. over copper strike



LANDING PAD DIMENSIONS

ITEM	MATERIAL	FINISH
Connector Body	Brass, Note 1	Gold, Note 8
Center Contact: M	BeCu, Note 3	Gold, Note 11
Insulation	Teflon, Note 5	None
Ferrule	--	--
Gasket	--	--
Hex Nut	Brass, Note 1	Same as body
Lock Washer	Brass, Note 1	Same as body

	<b>Lighthorse Technologies, Inc.</b> 5640 Keamy Mesa Rd. Ste. N San Diego, California 92111 Part Number: <b>LTI-SASF55LGT-3</b>	Description
		SMA End Launch Jack, Long Barrel, Square Flange.
Scale	3:1	File Name
Drawing No.	SASF55LGT-3	SASF55LGT-3